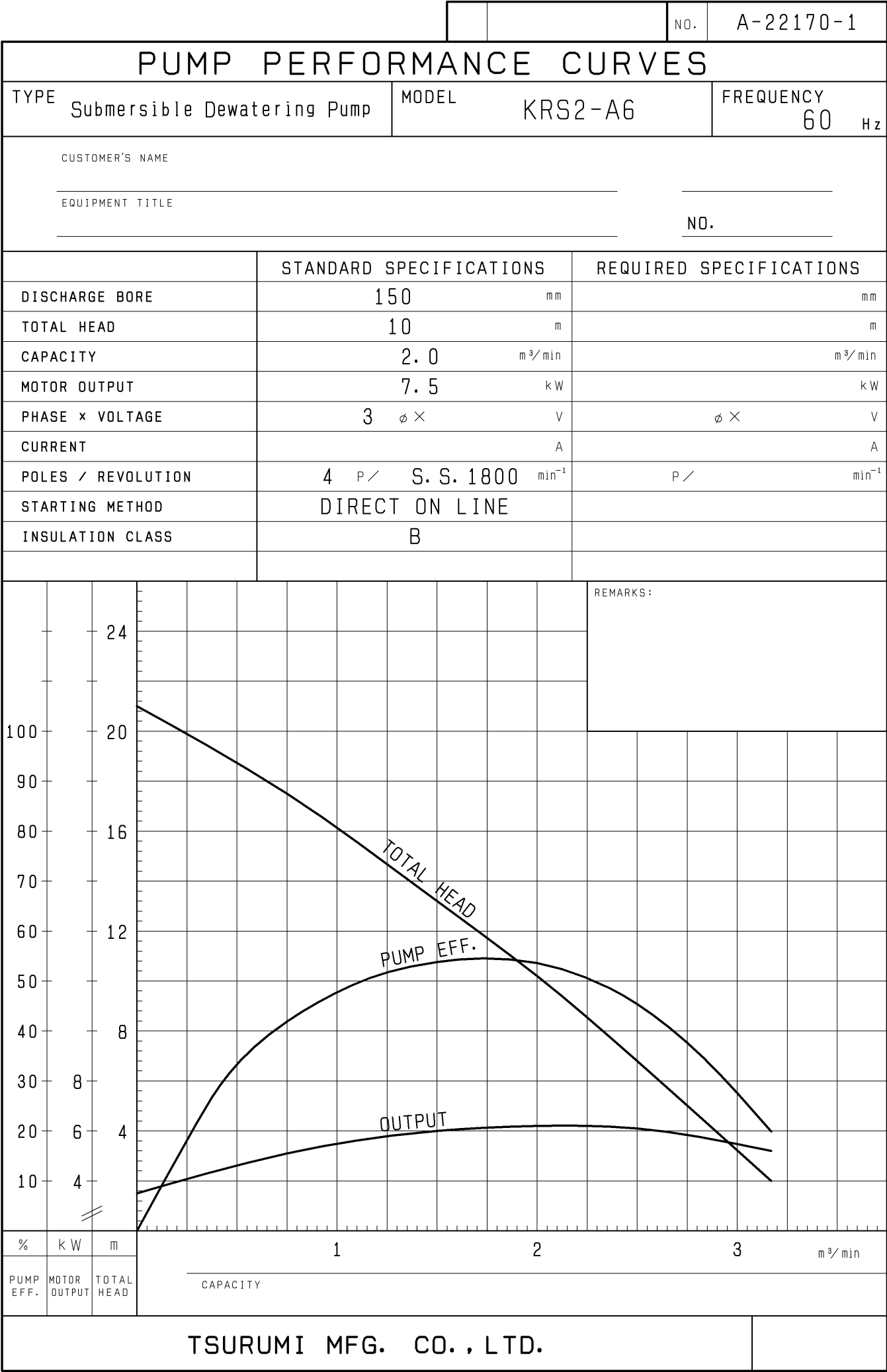


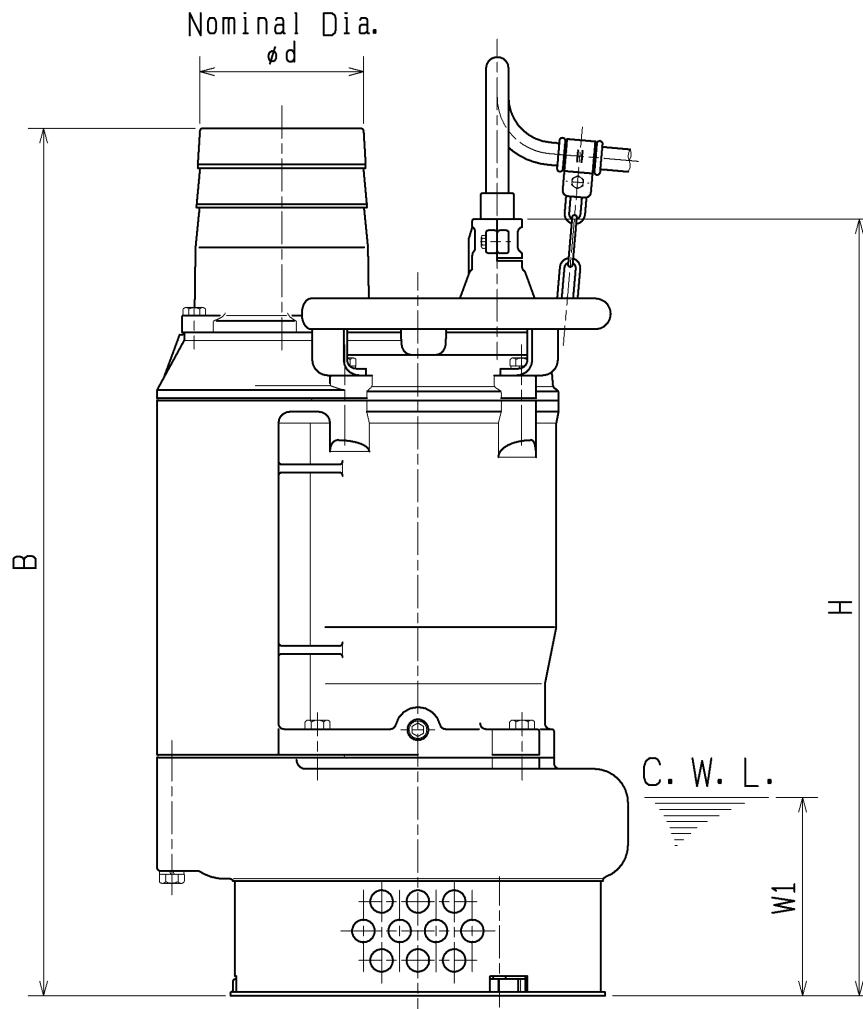
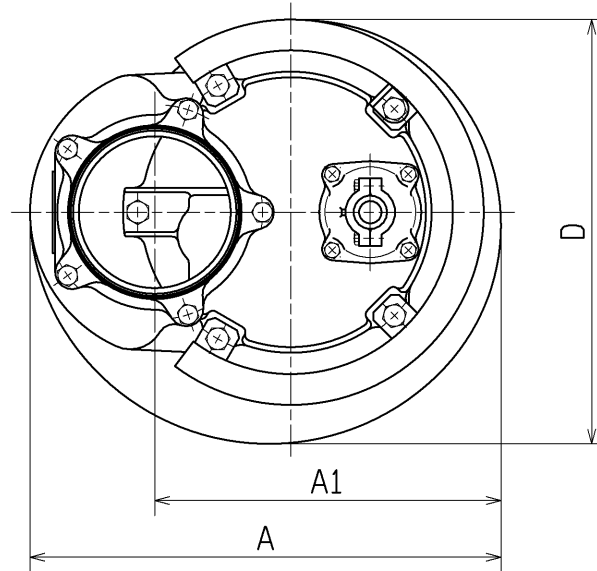
SPECIFICATIONS	Model	KRS2-C6/A6	KRS-series
			7.5kW, 3-phase
Type of Pump Submersible high volume drainage pump for construction and foundation works, floodwater drainage, etc.			Impeller Semi-open Impeller made of ductile cast iron
Type of Fluid Stormwater, groundwater, wash water, and sand-carrying water			Solids Passage 50Hz – ϕ20mm 60Hz – ϕ20mm
Temperature: 0 to 40°C (High temperature model available on special request)			Cable Entry with Anti-Wicking Block Watertight cable entry with strain-relief device. The anti-wicking block prevents water incursion due to capillary action should the power cable be damaged or the end submerged.
Discharge Bore & Connection 150mm, Hose Coupling			Bearing Permanently lubricated, deep-groove, double-shielded C3 ball bearings
Motor Output 7.5kW			Shaft 420 stainless steel
Power Supply Three-phase			Shaft Seal (Mechanical Seal) Furnished with a double-face mechanical seal located in oil chamber. Both upper and lower seal faces always run in a clean environment.
Starting Method Direct on Line (Star-Delta available on special request)			Upper Seal Face: SiC + SiC Lower Seal Face: SiC + SiC
Motor Continuous-duty rated, dry-type induction motor			Oil Seal (Lip Seal) Used as a “Dust Seal”, it protects the mechanical seal from abrasive particles.
Insulation Class: B Degree of Protection: IP68			OIL LIFTER (Patented) Equipped in oil chamber. It forcibly supplies lubricating oil to the mechanical seal and continues to supply the oil to the upper seal faces even if lubricant falls below the rated volume.
No. of Poles & Speed (Synchronous Speed) 4-pole, 1500/1800min ⁻¹ (50/60Hz)			Type of Lubricating Oil & Volume Turbine Oil (ISO VG32), 2300ml
Power Supply Voltages & Rated Currents 50Hz 60Hz 380V – 15.8A 220V – 26.5A 400V – 15.0A 380V – 16.0A 415V – 15.0A 440V – 13.5A			Motor Protection Device A circle thermal protector built in the motor housing. Directly cuts the motor circuit if excessive heat builds up or an overcurrent condition occurs in the motor.
Power Cable Sheath: Chloroprene rubber Standard Length: 8m 200 to 600V supply: 1 x 4 x 5.5mm ² , O.D. 19.8mm			
Dry Weight (excluding cable) 130kg			
TSURUMI MANUFACTURING CO., LTD.			



DIMENSION DRAWING					No.		No.	A-22183-1
TYPE Submersible Dewatering Pump					MODEL KRS2-C6/A6/D6/B6			

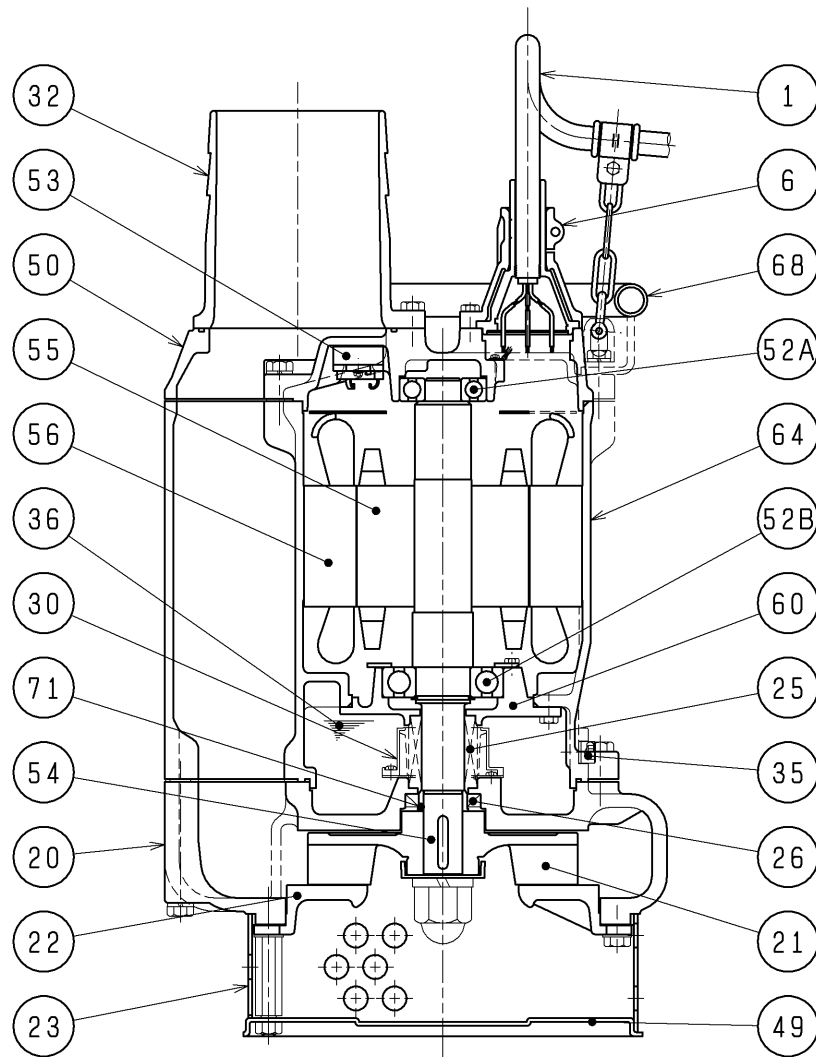
FREQUENCY	MODEL	φd	A	A1	D	B	H	W1	Approximate Weight (※)
50Hz	C6	150	415	305	374	765	685	175	130kg
	D6	150	433	323	407	812	744	180	158kg
60Hz	A6	150	415	305	374	765	685	175	130kg
	B6	150	415	305	374	810	742	175	150kg

※excluding cable



C. W. L. :Continuous running Water Level

SECTIONAL DRAWING		No.	No.	A-22190-1
TYPE	Submersible Dewatering Pump	MODEL	KRS2-C6/A6/D6/B6	



				REQ. SPECIFICATION			
		※1	※2				
7.5kW	6306ZZC3	6309ZZC3					
11kW	6307ZZC3	6310ZZC3					
No.	DESCRIPTION	QTY	MATERIAL / NOTE	No.	DESCRIPTION	QTY	MATERIAL / NOTE
1	Cabtyre Cable	1	Chloroprene Sheath	50	Motor Bracket	1	Gray Iron Casting
6	Stuffing Box	1	Gray Iron Casting	52A	Upper Bearing	1	※1
20	Pump Casing	1	Gray Iron Casting	52B	Lower Bearing	1	※2
21	Impeller	1	Ductile Iron Casting	53	Motor Protector	1	
22	Suction Cover	1	Gray Iron Casting	54	Shaft	1	Stainless Steel 420J2
23	Strainer	1	Steel Sheet	55	Rotor	1	
25	Mechanical Seal	1	H-35	56	Stator	1	
26	Oil Seal	1	TC406211	60	Bearing Housing	1	Gray Iron Casting
30	Oil Lifter	1	Plastic	64	Motor Frame	1	Gray Iron Casting
32	Hose Coupling	1	Gray Iron Casting	68	Handle	1	Carbon Steel Pipe & Steel Sheet
35	Oil Plug	1	Stainless Steel 304	71	Shaft Sleeve	1	Stainless Steel 403
36	Lubricant		Turbine Oil (ISO VG32)				
49	Bottom Plate	1	Steel Sheet				