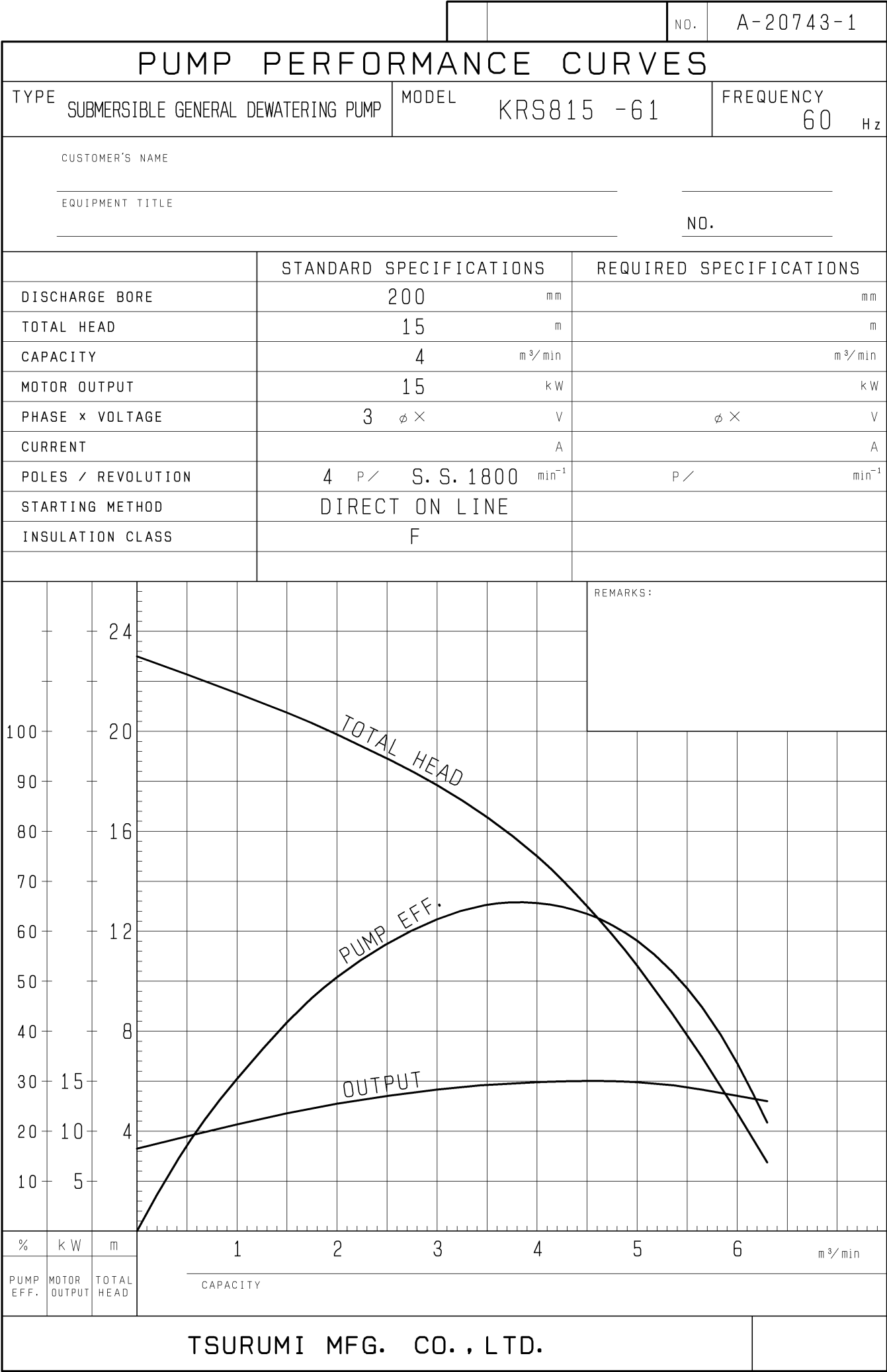


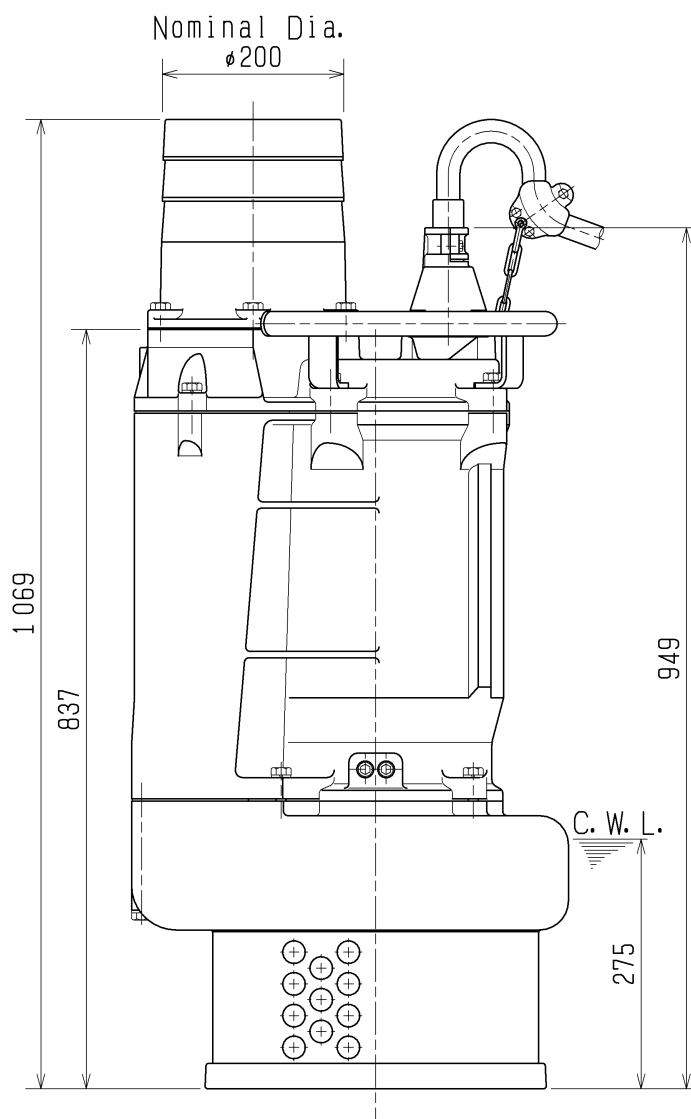
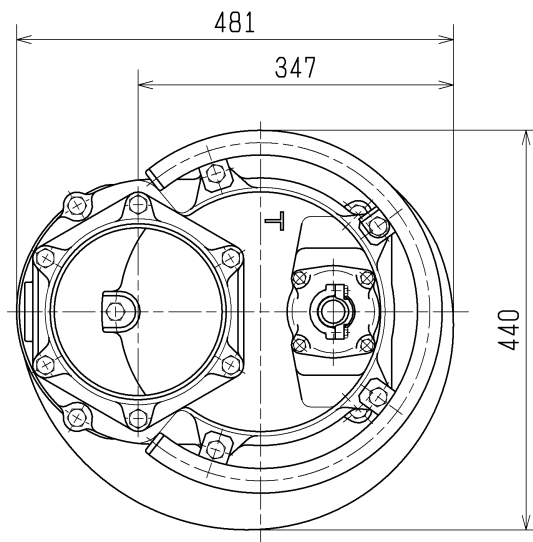
SPECIFICATIONS	Model	KRS815	KRS-series
			15kW, 3-phase
Type of Pump Submersible high volume drainage pump for construction and foundation works, floodwater drainage, etc.		Impeller Semi-open Impeller made of ductile cast iron	
Type of Fluid Stormwater, groundwater, wash water, and sand-carrying water		Solids Passage 50Hz – ϕ25mm 60Hz – ϕ25mm	
Temperature: 0 to 40°C (High temperature model available on special request)		Cable Entry with Anti-Wicking Block Watertight cable entry with strain-relief device. The anti-wicking block prevents water incursion due to capillary action should the power cable be damaged or the end submerged.	
Discharge Bore & Connection 200mm, Hose Coupling		Bearing Permanently lubricated, deep-groove, double-shielded C3 ball bearings	
Motor Output 15kW		Shaft 420 stainless steel	
Power Supply Three-phase		Shaft Seal (Mechanical Seal) Furnished with a double-face mechanical seal located in oil chamber. Both upper and lower seal faces always run in a clean environment.	
Starting Method Direct on Line (Star-Delta available on special request)		Upper Seal Face: SiC + SiC Lower Seal Face: SiC + SiC	
Motor Continuous-duty rated, dry-type induction motor		Oil Seal (Lip Seal) Used as a “Dust Seal”, it protects the mechanical seal from abrasive particles.	
Insulation Class: F Degree of Protection: IP68		OIL LIFTER (Patented) Equipped in oil chamber. It forcibly supplies lubricating oil to the mechanical seal and continues to supply the oil to the upper seal faces even if lubricant falls below the rated volume.	
No. of Poles & Speed (Synchronous Speed) 4-pole, 1500/1800min ⁻¹ (50/60Hz)		Type of Lubricating Oil & Volume Turbine Oil (ISO VG32), 3200ml	
Power Supply Voltages & Rated Currents 50Hz 60Hz 380V – 32.4A 220V – 56.2A 400V – 31.9A 380V – 32.5A 415V – 31.6A 440V – 28.1A		Motor Protection Device A circle thermal protector built in the motor housing. Directly cuts the motor circuit if excessive heat builds up or an overcurrent condition occurs in the motor.	
Power Cable Sheath: Chloroprene rubber Standard Length: 8m 380 to 600V supply: 1 x 4 x 8mm ² , O.D. 21.7mm 200 to 240V supply: 1 x 4 x 14mm ² , O.D. 25.6mm			
Dry Weight (excluding cable) 240kg			
TSURUMI MANUFACTURING CO., LTD.			



DIMENSION DRAWING		No.		No.	A-20752-1
TYPE	SUBMERSIBLE GENERAL DEWATERING PUMP		MODEL	KRS815 -51/61	

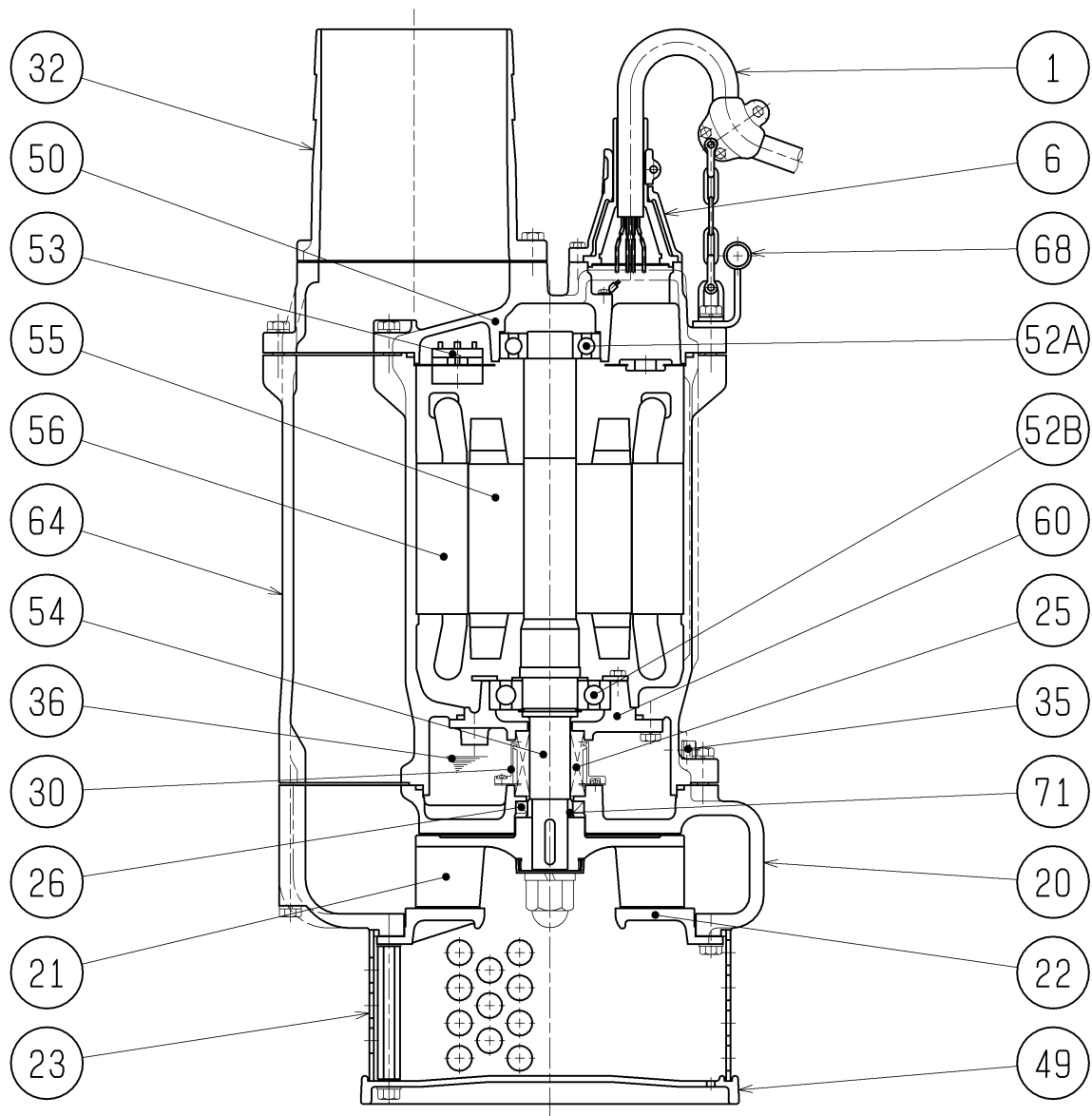
Approximate Weight (※)
240kg

※excluding cable



C. W. L. :Continuous running Water Level

SECTIONAL DRAWING		No.	No.	A-20755-2
TYPE	SUBMERSIBLE GENERAL DEWATERING PUMP	MODEL	KRS815 -51/61	



REQ. SPECIFICATION

No.	DESCRIPTION	Q'TY	MATERIAL / NOTE	No.	DESCRIPTION	Q'TY	MATERIAL / NOTE
1	Cabtyre Cable	1	Chloroprene Sheath	50	Motor Bracket	1	Gray Iron Casting
6	Stuffing Box	1	Gray Iron Casting	52A	Upper Bearing	1	6309ZZC3
20	Pump Casing	1	Gray Iron Casting	52B	Lower Bearing	1	6311ZZC3
21	Impeller	1	Ductile Iron Casting	53	Motor Protector	1	
22	Suction Cover	1	Gray Iron Casting	54	Shaft	1	Stainless Steel 420J2
23	Strainer	1	Steel Sheet	55	Rotor	1	
25	Mechanical Seal	1	H-40X	56	Stator	1	
26	Oil Seal	1	TC456812	60	Bearing Housing	1	Gray Iron Casting
30	Oil Lifter	1	Plastic	64	Motor Flame	1	Gray Iron Casting
32	Hose Coupling	1	Gray Iron Casting	68	Handle	1	Carbon Steel Pipe & Structure Steel
35	Oil Plug	2	Stainless Steel 304	71	Shaft Sleeve	1	Stainless Steel 403
36	Lubricant		Turbine Oil (ISO VG32)				
49	Bottom Plate	1	Mallorable Iron Casting				