

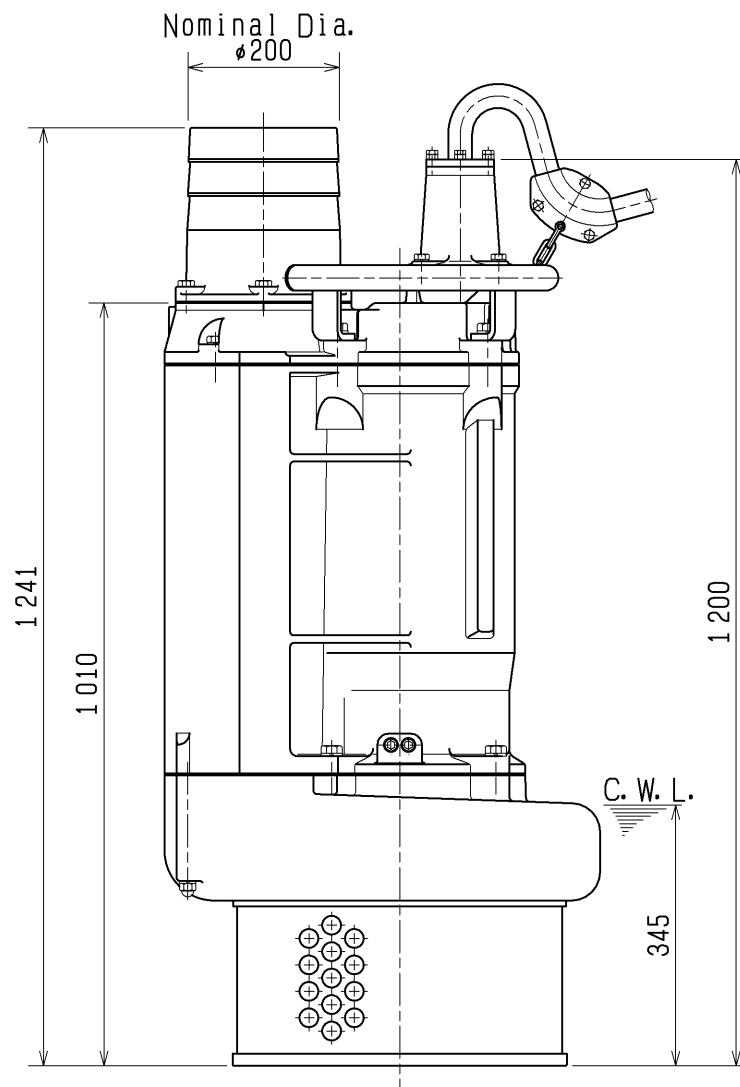
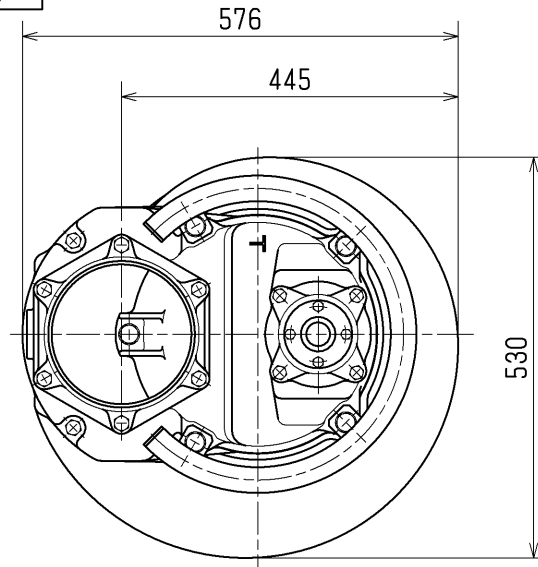
SPECIFICATIONS	Model	KRS819	KRS-series
			18.5kW, 3-phase
<b>Type of Pump</b> Submersible high volume drainage pump for construction and foundation works, floodwater drainage, etc.			<b>Impeller</b> Semi-open Impeller made of ductile cast iron
<b>Type of Fluid</b> Stormwater, groundwater, wash water, and sand-carrying water			Solids Passage 50Hz – ϕ25mm 60Hz – ϕ25mm
Temperature: 0 to 40°C (High temperature model available on special request)			<b>Cable Entry with Anti-Wicking Block</b> Watertight cable entry with strain-relief device. The anti-wicking block prevents water incursion due to capillary action should the power cable be damaged or the end submerged.
<b>Discharge Bore &amp; Connection</b> 200mm, Hose Coupling			<b>Bearing</b> Permanently lubricated, deep-groove, double-shielded C3 ball bearings
<b>Motor Output</b> 18.5kW			<b>Shaft</b> 420 stainless steel
<b>Power Supply</b> Three-phase			<b>Shaft Seal (Mechanical Seal)</b> Furnished with a double-face mechanical seal located in oil chamber. Both upper and lower seal faces always run in a clean environment.
<b>Starting Method</b> Direct on Line (Star-Delta available on special request)			Upper Seal Face: SiC + SiC Lower Seal Face: SiC + SiC
<b>Motor</b> Continuous-duty rated, dry-type induction motor			<b>Oil Seal (Lip Seal)</b> Used as a “Dust Seal”, it protects the mechanical seal from abrasive particles.
Insulation Class: F Degree of Protection: IP68			<b>OIL LIFTER (Patented)</b> Equipped in oil chamber. It forcibly supplies lubricating oil to the mechanical seal and continues to supply the oil to the upper seal faces even if lubricant falls below the rated volume.
No. of Poles & Speed (Synchronous Speed) 4-pole, 1500/1800min <sup>-1</sup> (50/60Hz)			Type of Lubricating Oil & Volume Turbine Oil (ISO VG32), 6500ml
Power Supply Voltages & Rated Currents 50Hz                      60Hz 380V – 37.0A            220V – 69.0A 400V – 35.5A            380V – 40.0A 415V – 35.0A            440V – 34.5A			<b>Motor Protection Device</b> A circle thermal protector built in the motor housing. Directly cuts the motor circuit if excessive heat builds up or an overcurrent condition occurs in the motor.
<b>Power Cable</b> Sheath: Chloroprene rubber Standard Length: 10m 380 to 600V supply: 1 x 4 x 14mm <sup>2</sup> , O.D. 25.6mm 200 to 240V supply: 1 x 4 x 22mm <sup>2</sup> , O.D. 31.6mm			
<b>Dry Weight</b> (excluding cable) 360kg			
TSURUMI MANUFACTURING CO., LTD.			

		NO. 図番		A-04031-1	
性能曲線図 PUMP PERFORMANCE CURVES					
TYPE SUBMERSIBLE GENERAL DEWATERING PUMP 名 称 一般工事排水用水中ポンプ		MODEL 型 式 KRS819-61		FREQUENCY 周波数 60 Hz	
CUSTOMER'S NAME 御注文先 殿					
EQUIPMENT TITLE 機器名称 NO.					
		標 準 仕 様 STANDARD SPECIFICATIONS		御注文仕様 REQUIRED SPECIFICATIONS	
□ 径 : DISCHARGE BORE		200 mm		mm	
全揚程 : TOTAL HEAD		20 / 15 m		m	
吐出し量 : CAPACITY		3 / 4 m <sup>3</sup> /min		m <sup>3</sup> /min	
出 力 : MOTOR OUTPUT		18.5 kW		kW	
相×電圧 : PHASE × VOLTAGE		3 φ × 200 V		φ × V	
電 流 : CURRENT		69 A		A	
極数: POLES / 回転数: REVOLUTION		4 P / S. S. 1800 min <sup>-1</sup>		P / min <sup>-1</sup>	
始動方式 : STARTING METHOD		じか入始動 DIRECT ON LINE			
絶縁階級 : INSULATION CLASS		F			
<p>REMARKS:</p>					
%	kW	m	CAPACITY 吐出し量		
PUMP EFF. ポンプ効率	OUT PUT 出力	TOTAL HEAD 全揚程			
株式会社 鶴見製作所			TSURUMI MFG. CO., LTD.		

DIMENSION DRAWING		No.		No.	A-20753-1
TYPE	SUBMERSIBLE GENERAL DEWATERING PUMP	MODEL	KRS819 -51/61 KRS822 -51/61 KRS822L -51/61		

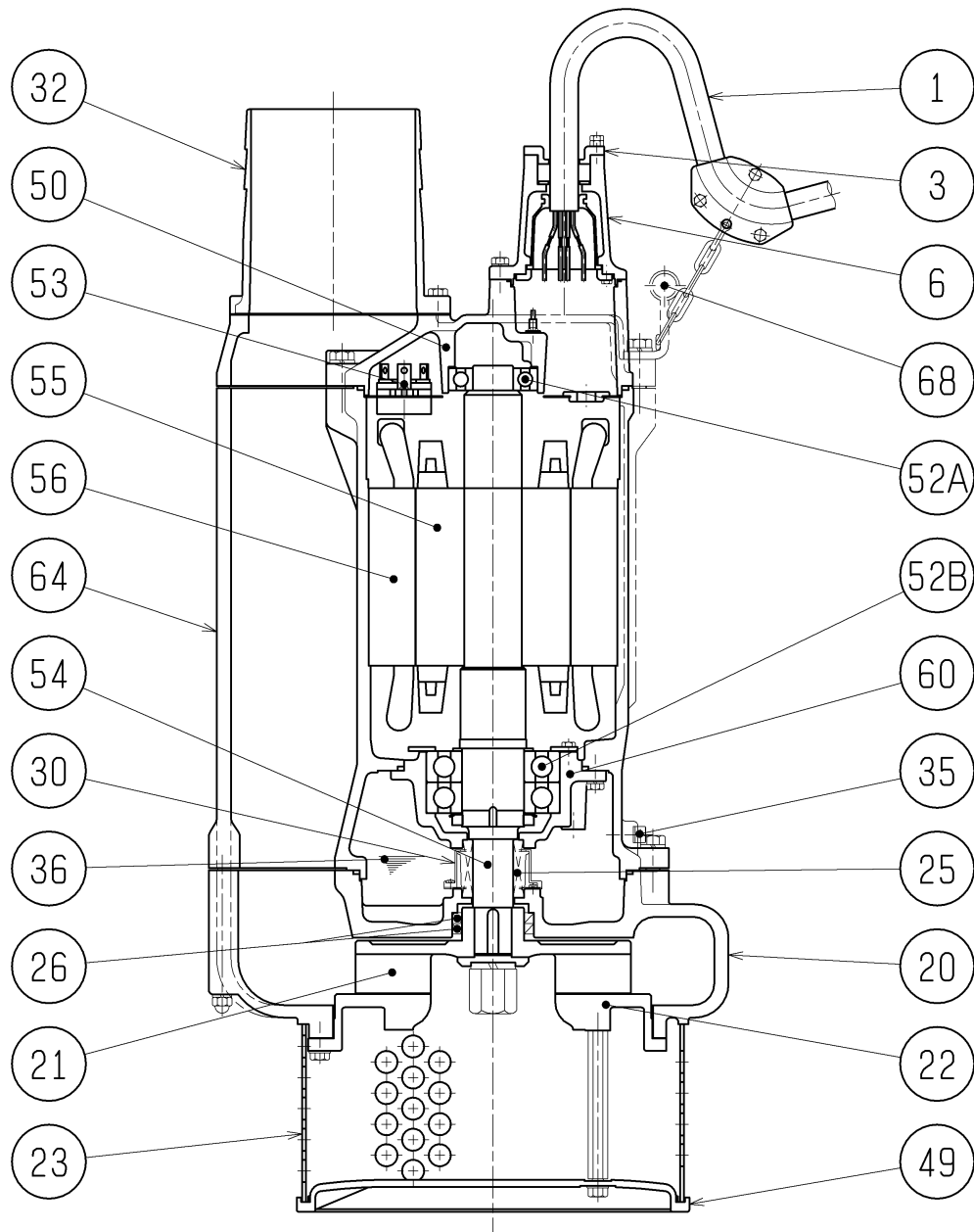
MODEL	Approximate Weight (※)
KRS819-51/61	360kg
KRS822-51/61	380kg
KRS822L-51/61	380kg

※excluding cable



C. W. L. :Continuous running Water Level

SECTIONAL DRAWING		No.		No.	A-20756-2
TYPE	SUBMERSIBLE GENERAL DEWATERING PUMP	MODEL	KRS819	-51/61	
			KRS822	-51/61	
			KRS822L	-51/61	



#### REQ. SPECIFICATION

No.	DESCRIPTION	Q'TY	MATERIAL / NOTE	No.	DESCRIPTION	Q'TY	MATERIAL / NOTE
1	Cabtyre Cable	1	Chloroprene Sheath	49	Bottom Plate	1	Ductile Iron Casting
3	Gland	1	Gray Iron Casting	50	Motor Bracket	1	Gray Iron Casting
6	Stuffing Box	1	Gray Iron Casting	52A	Upper Bearing	1	6309ZZC3
20	Pump Casing	1	Gray Iron Casting	52B	Lower Bearing	1	6314ZZD2C3
21	Impeller	1	Ductile Iron Casting	53	Motor Protector	1	
22	Suction Cover	1	Gray Iron Casting	54	Shaft	1	Stainless Steel 420J2
23	Strainer	1	Steel Sheet	55	Rotor	1	
25	Mechanical Seal	1	H-45X	56	Stator	1	
26	Oil Seal	2	TC709212	60	Bearing Housing	1	Gray Iron Casting
30	Oil Lifter	1	Plastic	64	Motor Flame	1	Gray Iron Casting
32	Hose Coupling	1	Gray Iron Casting	68	Handle	1	Carbon Steel Pipe & Structure Steel
35	Oil Plug	2	Stainless Steel 304				
36	Lubricant		Turbine Oil (ISO VG32)				