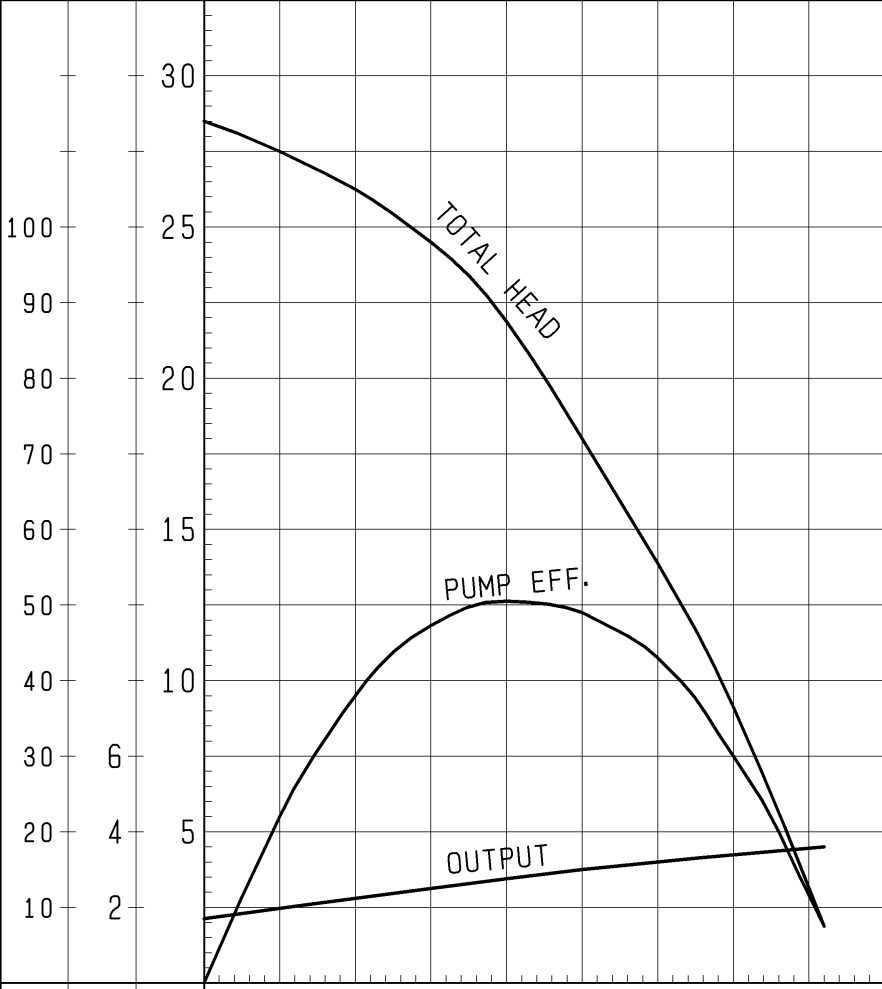


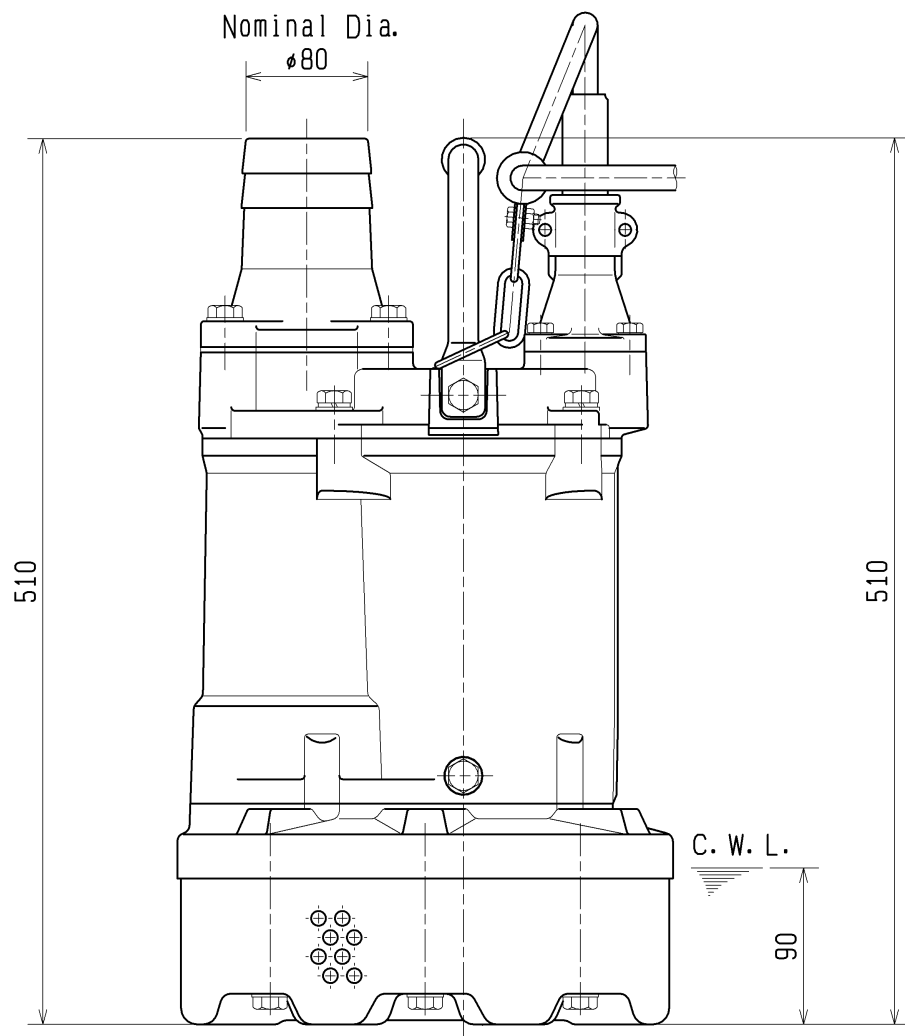
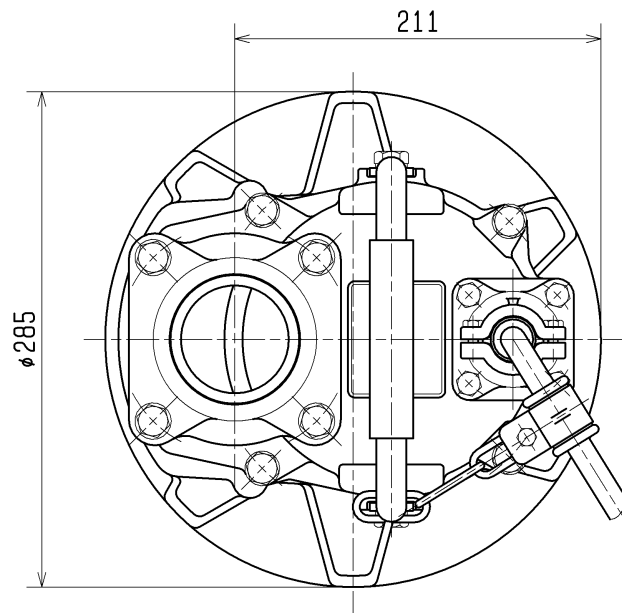
SPECIFICATIONS	Model	KTV2-37	KTV-series
			3.7kW, 3-phase
Type of Pump Submersible drainage pump for construction and foundation works, floodwater drainage, etc.		Impeller Vortex impeller deigned for “high-gap structure”, made of ductile cast iron	
Type of Fluid Stormwater, groundwater, wash water, and sand-carrying water		Solids Passage 50Hz – ϕ8.5mm 60Hz – ϕ8.5mm	
Temperature: 0 to 40°C		Cable Entry with Anti-Wicking Block Watertight cable entry with strain-relief device. The anti-wicking block prevents water incursion due to capillary action should the power cable be damaged or the end submerged.	
Discharge Bore & Connection 80mm, Hose Coupling (100mm discharge bore available on special request)		Bearing Permanently lubricated, deep-groove, double-shielded C3 ball bearings	
Motor Output 3.7kW		Shaft 403 stainless steel	
Power Supply Three-phase		Shaft Seal (Mechanical Seal) Furnished with a double-face mechanical seal located in oil chamber. Both upper and lower seal faces always run in a clean environment.	
Starting Method Direct on Line		Upper Seal Face: SiC + SiC Lower Seal Face: SiC + SiC	
Motor Continuous-duty rated, dry-type induction motor		OIL LIFTER (Patented) Equipped in oil chamber. It forcibly supplies lubricating oil to the mechanical seal and continues to supply the oil to the upper seal faces even if lubricant falls below the rated volume.	
Insulation Class: E Degree of Protection: IP68		Type of Lubricating Oil & Volume Turbine Oil (ISO VG32), 400ml	
No. of Poles & Speed (Synchronous Speed) 2-pole, 3000/3600min ⁻¹ (50/60Hz)		Motor Protection Device A circle thermal protector built in the motor housing. Directly cuts the motor circuit if excessive heat builds up or an overcurrent condition occurs in the motor.	
Power Supply Voltages & Rated Currents 50Hz 60Hz 380V – 8.6A 220V – 13.0A 400V – 7.4A 380V – 8.0A 415V – 7.4A 440V – 6.5A			
Power Cable Sheath: Chloroprene rubber Standard Length: 8m 200 to 600V supply: 1 x 4 x 2.0mm ² , O.D. 14.4mm			
Dry Weight (excluding cable) 36kg			
TSURUMI MANUFACTURING CO., LTD.			

		NO.		A-15440-2																									
PUMP PERFORMANCE CURVES																													
TYPE		Submersible Dewatering Pump		MODEL KTV2-37																									
				FREQUENCY 60 Hz																									
CUSTOMER'S NAME																													
EQUIPMENT TITLE																													
NO.																													
		STANDARD SPECIFICATIONS		REQUIRED SPECIFICATIONS																									
DISCHARGE BORE		80 mm		mm																									
TOTAL HEAD		18 m		m																									
CAPACITY		0.5 m ³ /min		m ³ /min																									
MOTOR OUTPUT		3.7 kW		kW																									
PHASE × VOLTAGE		3 φ × V		φ × V																									
CURRENT		A		A																									
POLES / REVOLUTION		2 P / S. S. 3600 min ⁻¹		P / min ⁻¹																									
STARTING METHOD		DIRECT ON LINE																											
INSULATION CLASS		E																											
				REMARKS:																									
 <p>The graph displays three performance curves for the pump. The x-axis represents Capacity in m³/min, ranging from 0 to 1.4 with major grid lines every 0.2 units. The left y-axis has two scales: one for Head in meters (m) ranging from 0 to 30, and another for Motor Output in kW ranging from 0 to 100. The right y-axis represents Pump Efficiency in percent (%), ranging from 0 to 100. The 'TOTAL HEAD' curve starts at approximately 28.5 m at 0 capacity and decreases to about 8 m at 0.8 m³/min. The 'PUMP EFF.' curve starts at 0, peaks at approximately 50% efficiency at a capacity of 0.4 m³/min, and then declines. The 'OUTPUT' curve starts at approximately 1.5 kW at 0 capacity and increases linearly to about 4.5 kW at 0.8 m³/min.</p> <table border="1"><thead><tr><th>CAPACITY (m³/min)</th><th>TOTAL HEAD (m)</th><th>PUMP EFF. (%)</th><th>OUTPUT (kW)</th></tr></thead><tbody><tr><td>0.0</td><td>28.5</td><td>0</td><td>1.5</td></tr><tr><td>0.2</td><td>26.0</td><td>35</td><td>2.0</td></tr><tr><td>0.4</td><td>22.0</td><td>50</td><td>2.5</td></tr><tr><td>0.6</td><td>16.0</td><td>40</td><td>3.0</td></tr><tr><td>0.8</td><td>8.0</td><td>25</td><td>4.5</td></tr></tbody></table>				CAPACITY (m ³ /min)	TOTAL HEAD (m)	PUMP EFF. (%)	OUTPUT (kW)	0.0	28.5	0	1.5	0.2	26.0	35	2.0	0.4	22.0	50	2.5	0.6	16.0	40	3.0	0.8	8.0	25	4.5		
CAPACITY (m ³ /min)	TOTAL HEAD (m)	PUMP EFF. (%)	OUTPUT (kW)																										
0.0	28.5	0	1.5																										
0.2	26.0	35	2.0																										
0.4	22.0	50	2.5																										
0.6	16.0	40	3.0																										
0.8	8.0	25	4.5																										
% kW m		CAPACITY																											
PUMP EFF.	MOTOR OUTPUT	TOTAL HEAD																											
TSURUMI MFG. CO., LTD.																													

DIMENSION DRAWING		No.	No.	A-22070-1
TYPE	Submersible Dewatering Pump	MODEL	KTV2-37	

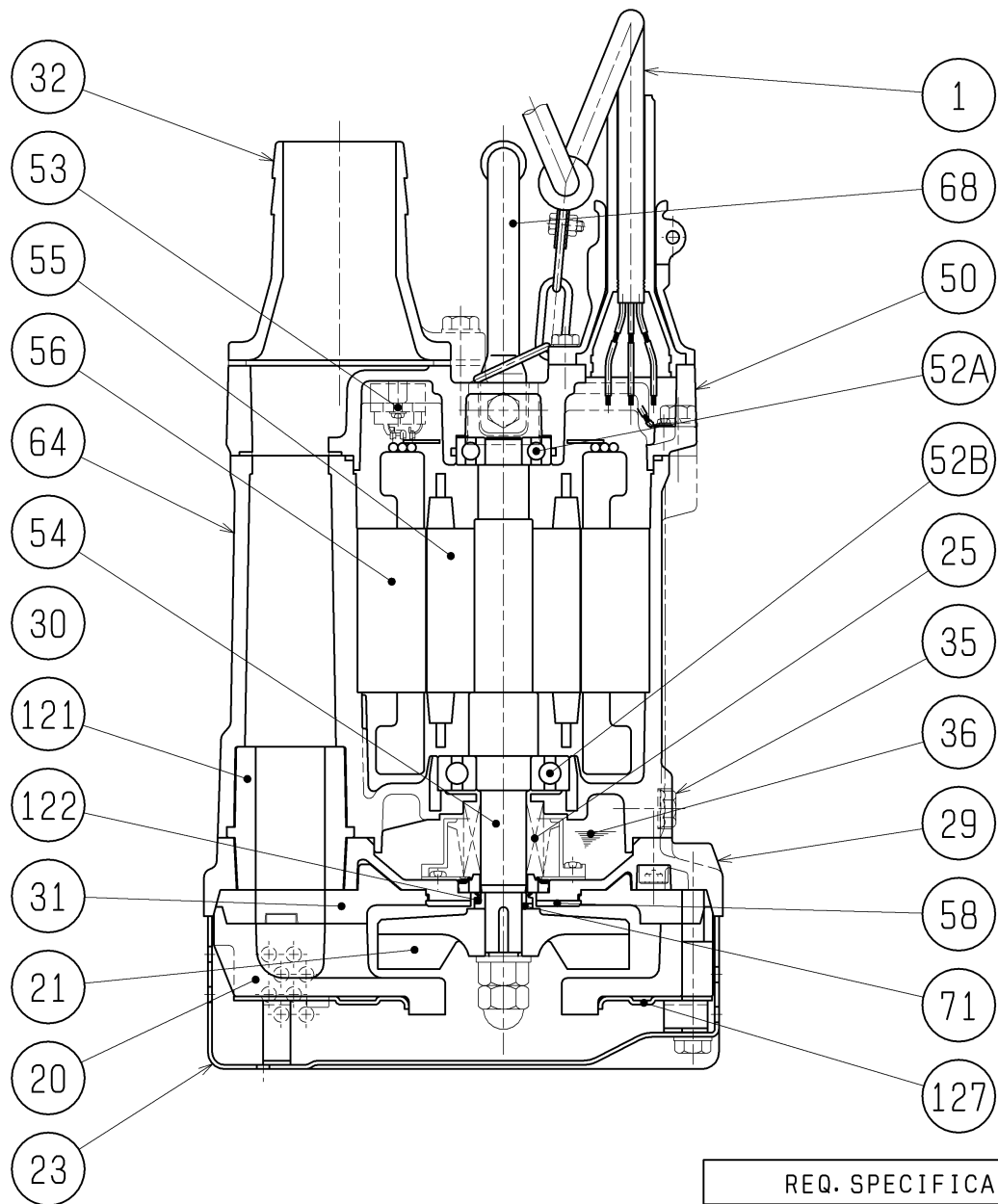
Approximate Weight (※)
36kg

※excluding cable



C. W. L. :Continuous running Water Level

SECTIONAL DRAWING		No.		No.	A-22077-1
TYPE	Submersible Dewatering Pump	MODEL	KTV2-37		



REQ. SPECIFICATION

No.	DESCRIPTION	Q'TY	MATERIAL / NOTE	No.	DESCRIPTION	Q'TY	MATERIAL / NOTE
1	Cabtyre Cable	1	Chloroprene Sheath	53	Motor Protector	1	
20	Pump Casing	1	Butadiene Rubber + Natural Rubber	54	Shaft	1	Stainless Steel 403
21	Impeller	1	Chromium Iron Casting	55	Rotor	1	
23	Strainer Stand	1	Steel Sheet & Carbon Steel Pipe	56	Stator	1	
25	Mechanical Seal	1	H-25T	58	Protection Plate	1	Stainless Steel 304
29	Oil Casing	1	Aluminium Die Casting	64	Motor Frame	1	Aluminium Die Casting
30	Oil Lifter	1	Plastic	68	Handle	1	Carbon Steel Pipe & Rubber
31	Rear Liner	1	Butadiene Rubber	71	Shaft Sleeve	1	Stainless Steel 304
32	Hose Coupling	1	Aluminium Die Casting	121	Packing	1	Styrene Butadiene Rubber
35	Oil Plug	1	Stainless Steel 304	122	V-ring	1	Nitrile Butadiene Rubber
36	Lubricant		Turbine Oil (ISO VG32)	127	Fixing Plate	1	Steel Sheet
50	Motor Bracket	1	Aluminium Die Casting				
52A	Upper Bearing	1	6204ZZC3				
52B	Lower Bearing	1	6306ZZC3				