

SPECIFICATIONS	Model	KTV3-55	KTV-series								
			5.5kW, 3-phase								
<p><b>Type of Pump</b> Submersible drainage pump for construction and foundation works, floodwater drainage, etc.</p> <p><b>Type of Fluid</b> Stormwater, groundwater, wash water, and sand-carrying water</p> <p>Temperature: 0 to 40°C</p> <p><b>Discharge Bore &amp; Connection</b> 80mm, Hose Coupling (100mm discharge bore available on special request)</p> <p><b>Motor Output</b> 5.5kW</p> <p><b>Power Supply</b> Three-phase</p> <p><b>Starting Method</b> Direct on Line</p> <p><b>Motor</b> Continuous-duty rated, dry-type induction motor</p> <p>Insulation Class: E Degree of Protection: IP68</p> <p>No. of Poles &amp; Speed (Synchronous Speed) 2-pole, 3000/3600min<sup>-1</sup> (50/60Hz)</p> <p>Power Supply Voltages &amp; Rated Currents</p> <table><tr><td>50Hz</td><td>60Hz</td></tr><tr><td>380V – 11.6A</td><td>220V – 19.5A</td></tr><tr><td>400V – 11.0A</td><td>380V – 11.7A</td></tr><tr><td>415V – 10.6A</td><td>440V – 10.0A</td></tr></table> <p><b>Power Cable</b> Sheath: Chloroprene rubber Standard Length: 8m 200 to 600V supply: 1 x 4 x 3.5mm<sup>2</sup>, O.D. 16.8mm</p> <p><b>Dry Weight</b> (excluding cable) 47kg</p>		50Hz	60Hz	380V – 11.6A	220V – 19.5A	400V – 11.0A	380V – 11.7A	415V – 10.6A	440V – 10.0A	<p><b>Impeller</b> Vortex impeller deigned for “high-gap structure,” made of ductile cast iron</p> <p>Solids Passage 50Hz – ϕ8.5mm 60Hz – ϕ8.5mm</p> <p><b>Cable Entry with Anti-Wicking Block</b> Watertight cable entry with strain-relief device. The anti-wicking block prevents water incursion due to capillary action should the power cable be damaged or the end submerged.</p> <p><b>Bearing</b> Permanently lubricated, deep-groove, double-shielded C3 ball bearings</p> <p><b>Shaft</b> 403 stainless steel</p> <p><b>Shaft Seal</b> (Mechanical Seal) Furnished with a double-face mechanical seal located in oil chamber. Both upper and lower seal faces always run in a clean environment.</p> <p>Upper Seal Face: SiC + SiC Lower Seal Face: SiC + SiC</p> <p><b>OIL LIFTER</b> (Patented) Equipped in oil chamber. It forcibly supplies lubricating oil to the mechanical seal and continues to supply the oil to the upper seal faces even if lubricant falls below the rated volume.</p> <p>Type of Lubricating Oil &amp; Volume Turbine Oil (ISO VG32), 680ml</p> <p><b>Motor Protection Device</b> A circle thermal protector built in the motor housing. Directly cuts the motor circuit if excessive heat builds up or an overcurrent condition occurs in the motor.</p>	
50Hz	60Hz										
380V – 11.6A	220V – 19.5A										
400V – 11.0A	380V – 11.7A										
415V – 10.6A	440V – 10.0A										
TSURUMI MANUFACTURING CO., LTD.											

NO. A-15446-2

PUMP PERFORMANCE CURVES

TYPESubmersible Dewatering Pump

MODELKTV3-55

FREQUENCY60 Hz

CUSTOMER'S NAME

EQUIPMENT TITLE

NO.

	STANDARD SPECIFICATIONS	REQUIRED SPECIFICATIONS
DISCHARGE BORE	80 mm	mm
TOTAL HEAD	22 m	m
CAPACITY	0.6 m <sup>3</sup> /min	m <sup>3</sup> /min
MOTOR OUTPUT	5.5 kW	kW
PHASE × VOLTAGE	3 φ × V	φ × V
CURRENT	A	A
POLES / REVOLUTION	2 P / S. S. 3600 min <sup>-1</sup>	P / min <sup>-1</sup>
STARTING METHOD	DIRECT ON LINE	
INSULATION CLASS	E	

60

50

40

30

20

10

2

100

90

80

70

60

50

40

30

20

10

2

0.2

0.4

0.6

0.8

1.0

1.2

m<sup>3</sup>/min

TOTAL HEAD

PUMP EFF.

OUTPUT

%

kW

m

PUMP EFF.

MOTOR OUTPUT

TOTAL HEAD

CAPACITY

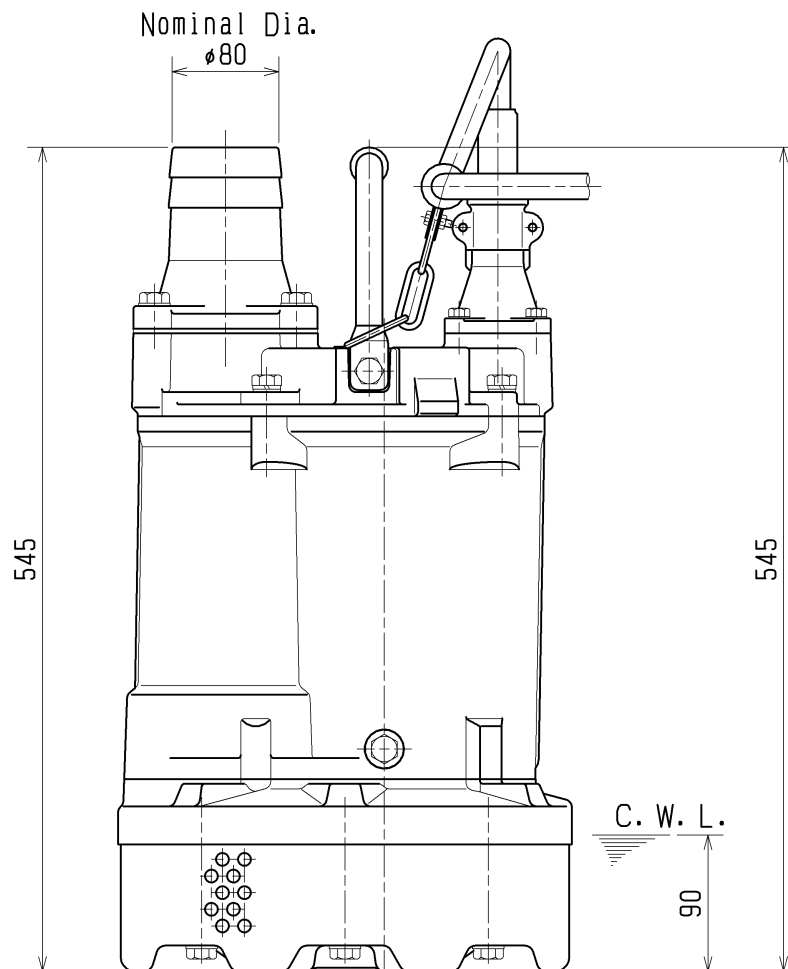
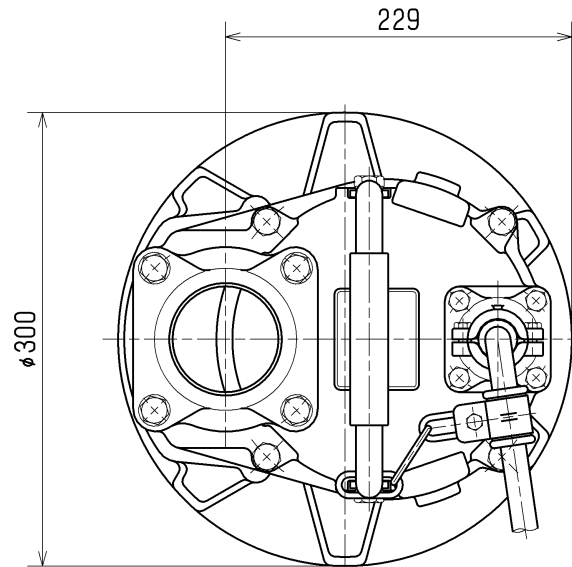
REMARKS:

TSURUMI MFG. CO., LTD.

DIMENSION DRAWING		No.	No.	A-22074-1
TYPE	Submersible Dewatering Pump	MODEL	KTV3-55	

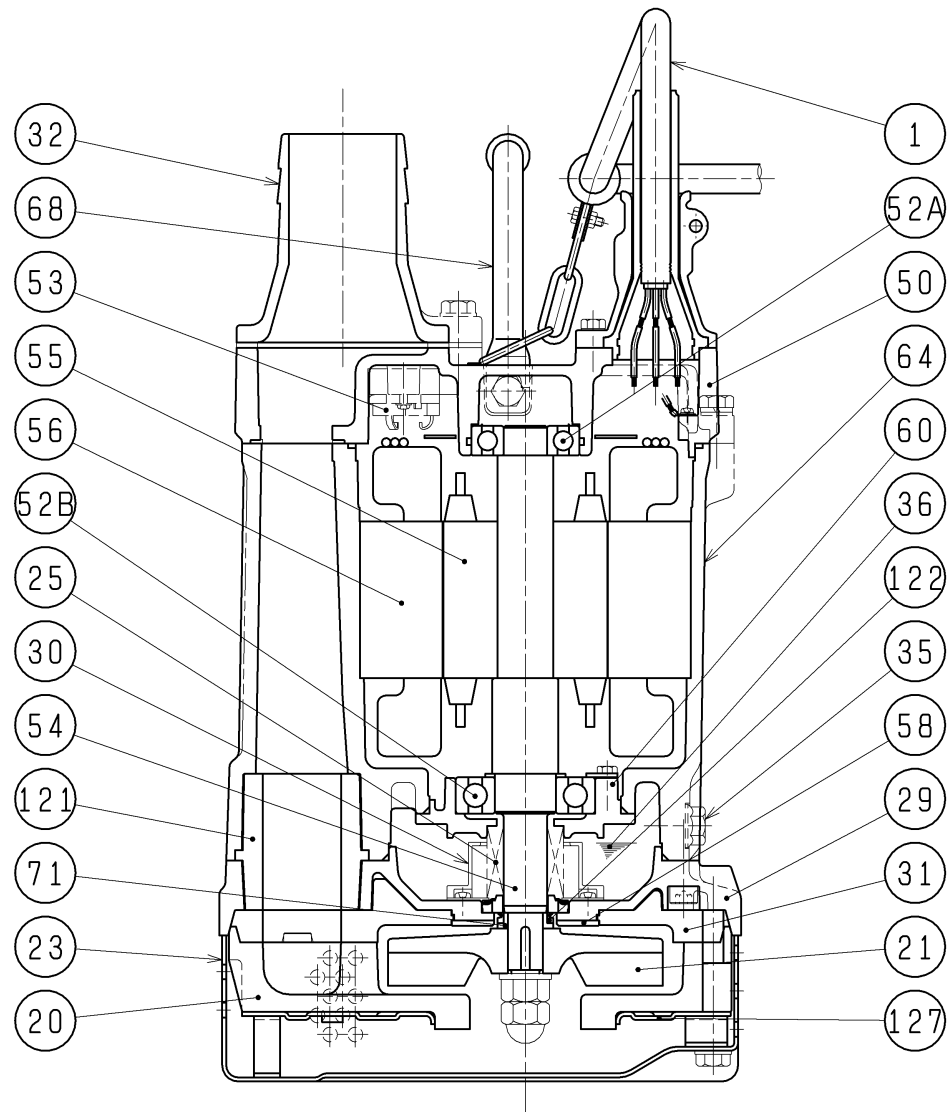
Approximate Weight (※)
47kg

※excluding cable



C. W. L. :Continuous running Water Level

SECTIONAL DRAWING		No.	No.	A-22081-1
TYPE	Submersible Dewatering Pump	MODEL	KTV3-55	



#### REQ. SPECIFICATION

No.	DESCRIPTION	QTY	MATERIAL / NOTE	No.	DESCRIPTION	QTY	MATERIAL / NOTE
1	Cabtyre Cable	1	Chloroprene Sheath	53	Motor Protector	1	
20	Pump Casing	1	Butadiene Rubber + Natural Rubber	54	Shaft	1	Stainless Steel 403
21	Impeller	1	Ductile Iron Casting	55	Rotor	1	
23	Strainer	1	Steel Sheet	56	Stator	1	
25	Mechanical Seal	1	H-25T	58	Protection Plate	1	Stainless Steel 304
29	Oil Casing	1	Aluminium Die Casting	60	Bearing Housing	1	Aluminium Die Casting
30	Oil Lifter	1	Plastic	64	Motor Frame	1	Aluminium Die Casting
31	Rear Liner	1	Butadiene Rubber	68	Handle	1	Carbon Steel Pipe & Rubber
32	Hose Coupling	1	Aluminium Die Casting	71	Shaft Sleeve	1	Stainless Steel 304
35	Oil Plug	1	Stainless Steel 304	121	Packing	1	Styrene Butadiene Rubber
36	Lubricant	1	Turbine Oil (ISO VG32)	122	V-ring	1	Nitrile Butadiene Rubber
50	Motor Bracket		Aluminium Die Casting	127	Fittings	1	Steel Sheet
52A	Upper Bearing	1	6305ZZC3				
52B	Lower Bearing	1	6307ZZC3				

TSURUMI MFG. CO., LTD